




STEAME: “Guidelines for Developing and Implementing STEAME Schools”

KA2 - Agreement Number : 2019-1-CY01-KA201-058240
Implementation period: November 2019 – October 2021

Pre - Evaluation of the STEAME Project
October 2020

STEAME Evaluation Committee:

Andreas Skotinos (CyMS), Evangelos Gazis (IASA), Eleni Adamidi (IASA)



Pre- Evaluation Method: Data were collected during TPM1, November 2019, Cyprus.
Questionnaires were manually filled by all partners.

1. Background on the topic of the project

4= High Level;3=Moderate High Level;2=Moderate Low level;1=Low Level <i>(Just put an X in the appropriate box!). NA= non-applicable</i>	4	3	2	1	NA
Thinking of your own background and professional development needs, please indicate the extent to which you understand the role and meaning of each of the following areas in the process of education of an individual entering the real world:					
(a) Science.					
(a) Technology in general					
(a) ICT					
(a) Engineering					
(a) Art					
(a) Mathematics					
(a) Entrepreneurship					

2. The Organisation/ management arrangements

4= High Level;3=Moderate High Level;2=Moderate Low level;1=Low Level <i>(Just put an X in the appropriate box!). NA= non-applicable</i>	4	3	2	1	NA
Are you informed about the content of the project?					
Are you informed about the management arrangements of the project?					
How are you approached to fill this form of the project?					
<i>(You may add a statement of your choice here and give a rate)</i>					

3. The Content of the project

4= High Level;3=Moderate High Level;2=Moderate Law level;1=Law Level <i>(Just put an X in the appropriate box!). NA= non-applicable</i>	4	3	2	1	NA
Do you feel comfortable and familiar with the aims of the project?					
Do you feel willing to be involved with the expected activities of the project?					
Do you feel comfortable and familiar with a broad description of the expected outcomes of the project?					
Have you been involved in the process of thinking of the consequences of the developments in the real world and the competencies needed from the future citizens?					
Do you feel that the present project could contribute to the proper preparation of the future citizens students ?					
Do you feel that the present project could contribute to the proper preparation of the teachers?					
Do you feel that the project outputs could contribute to the development of STEAME education in your country?					
Do you feel that the project outputs could contribute to the development of STEAME education in Europe?					



4. Concerns – Open Questions

What type of risks are you envisaging in the process of developing activities in the context of the present project?


What are the main issues/elements, for which you are, in major, concerned?

What are some problems that have to be considered in the context of the project?

Any other comments?:



The questionnaire was answered
by 11 participants from 6 partner
Organizations.



Evaluation Results

A solid orange horizontal bar is positioned below the title, extending across most of the width of the white box.



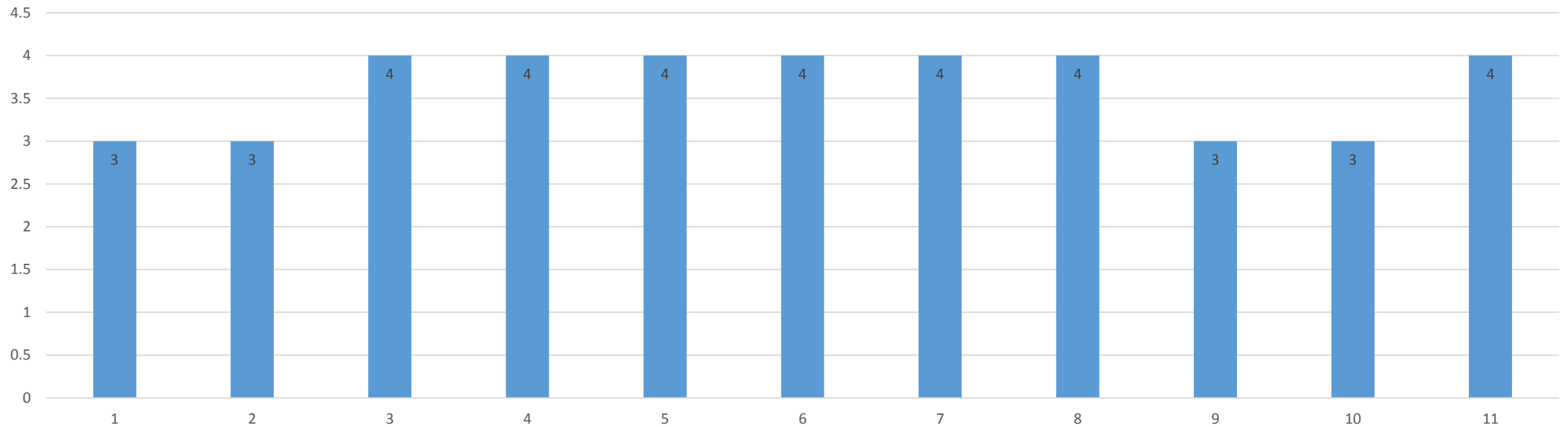
1. Background on the topic of the project-Results

- Thinking of your own background and professional development needs, please indicate the extent to which you understand the role and meaning of each of the following areas in the process of education of an individual entering the real world:

Q1. Thinking of your own background and professional development needs, please indicate the extent to which you understand the role and meaning of each of the following areas in the process of education of an individual entering the real world

Q1(a)_Science
Average: 3.6

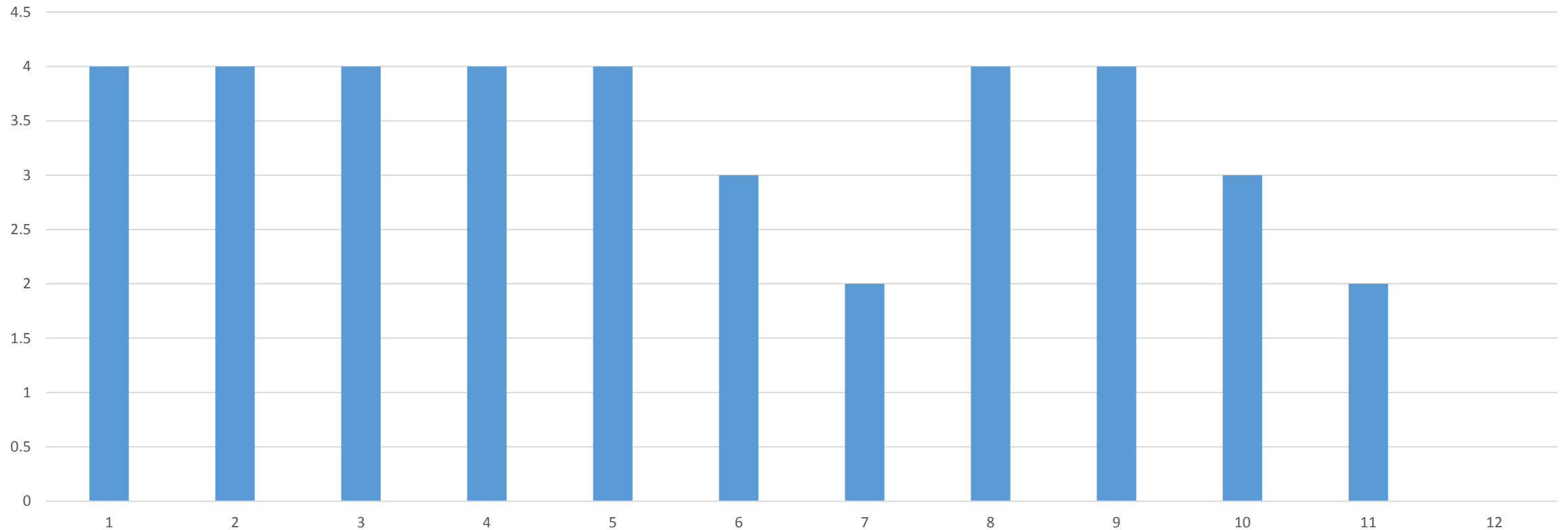
Q1(a). Science



Q1. Thinking of your own background and professional development needs, please indicate the extent to which you understand the role and meaning of each of the following areas in the process of education of an individual entering the real world

Q1(b)_Technology
Average: 3.5

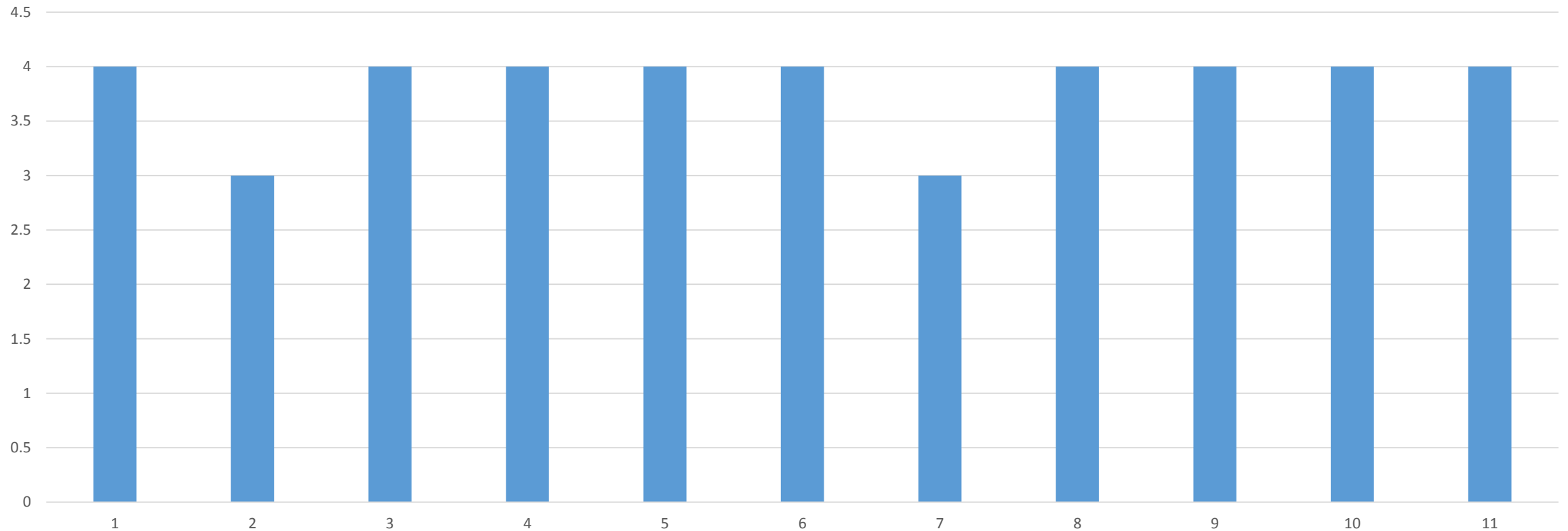
Q1 (b) Technology



Q1. Thinking of your own background and professional development needs, please indicate the extent to which you understand the role and meaning of each of the following areas in the process of education of an individual entering the real world

Q1(c)_ICT
Average: 3.8

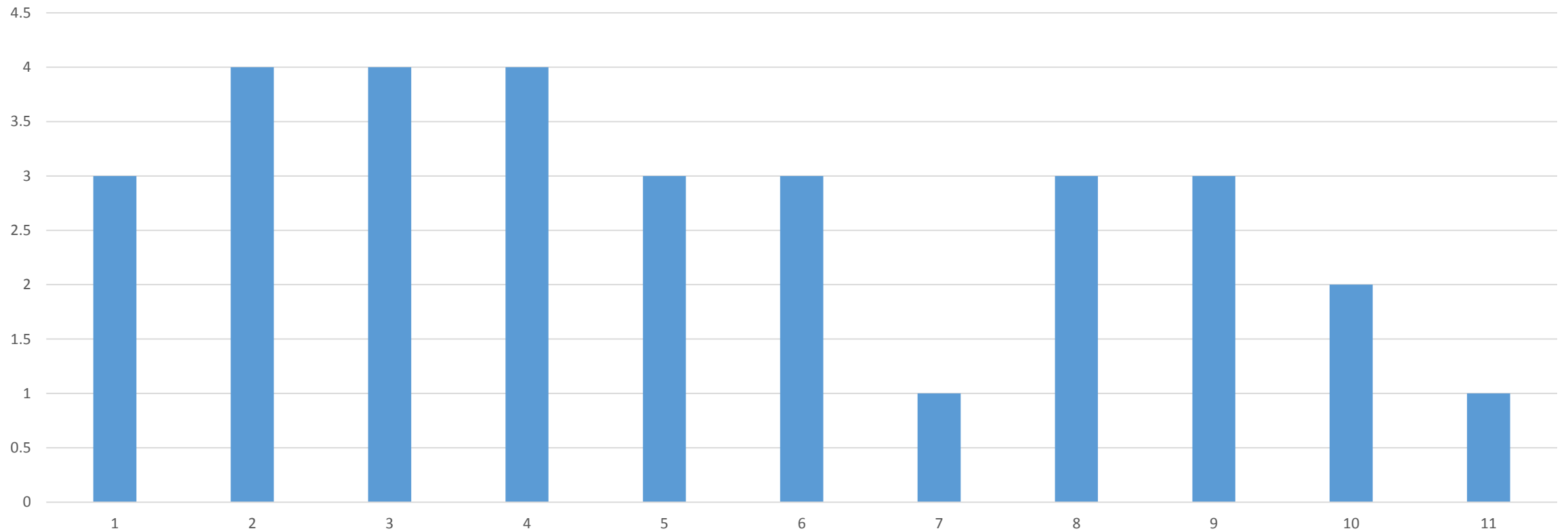
Q1 (c). ICT



Q1. Thinking of your own background and professional development needs, please indicate the extent to which you understand the role and meaning of each of the following areas in the process of education of an individual entering the real world

Q1(d)_Engineering
Average: 2.8

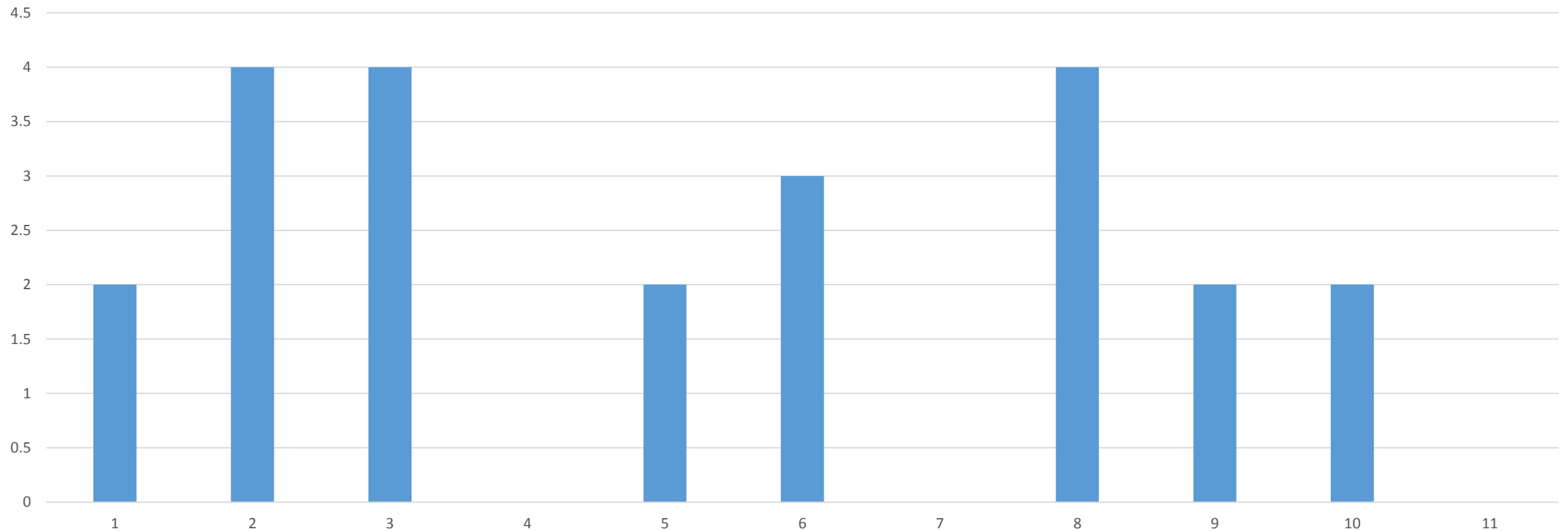
Q1(d). Engineering



Q1. Thinking of your own background and professional development needs, please indicate the extent to which you understand the role and meaning of each of the following areas in the process of education of an individual entering the real world

Q1(e)_Art
Average: 2.8

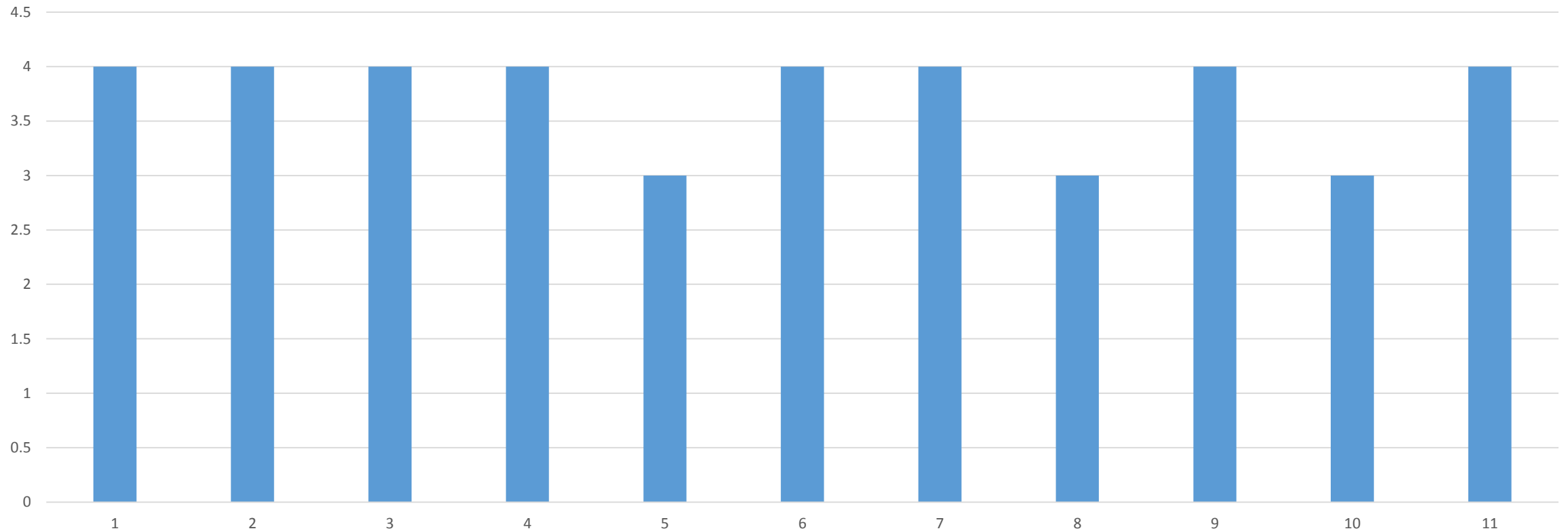
Q1(e). Art



Q1. Thinking of your own background and professional development needs, please indicate the extent to which you understand the role and meaning of each of the following areas in the process of education of an individual entering the real world

Q1(f)_Mathematics
Average: 3.7

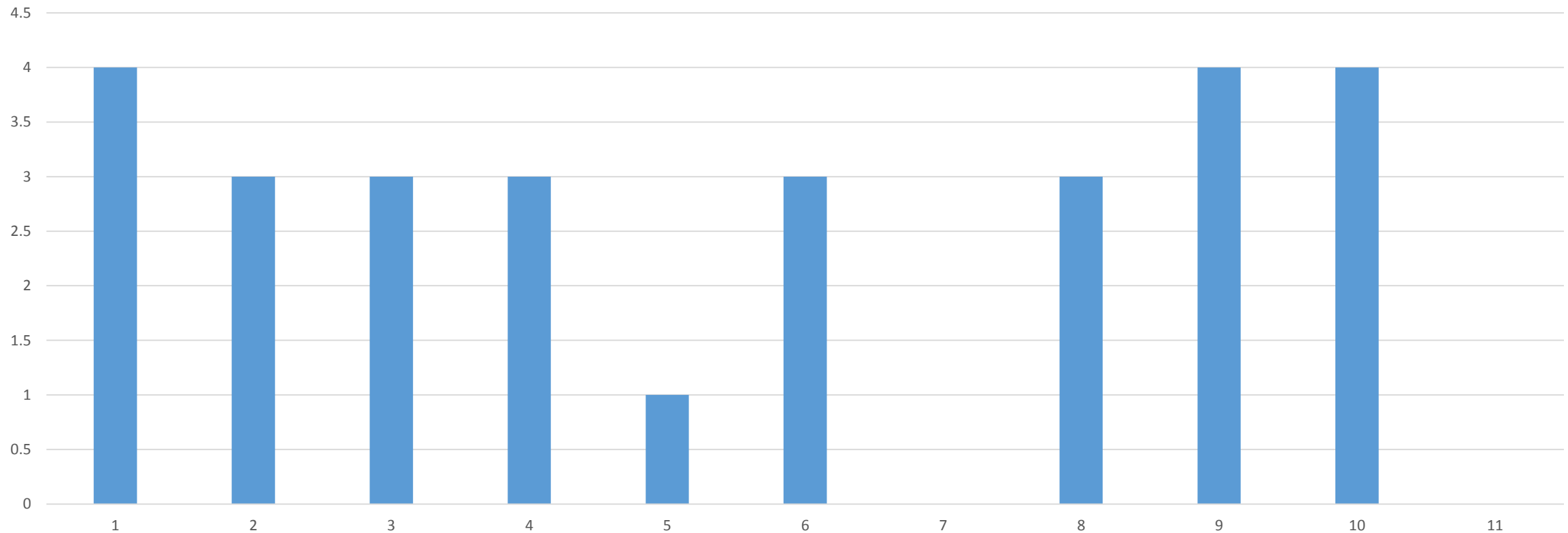
Q1(f). Mathematics



Q1. Thinking of your own background and professional development needs, please indicate the extent to which you understand the role and meaning of each of the following areas in the process of education of an individual entering the real world

Q1(g)_Entrepreneurship
Average: 3.1

Q1(g). Entrepreneurship



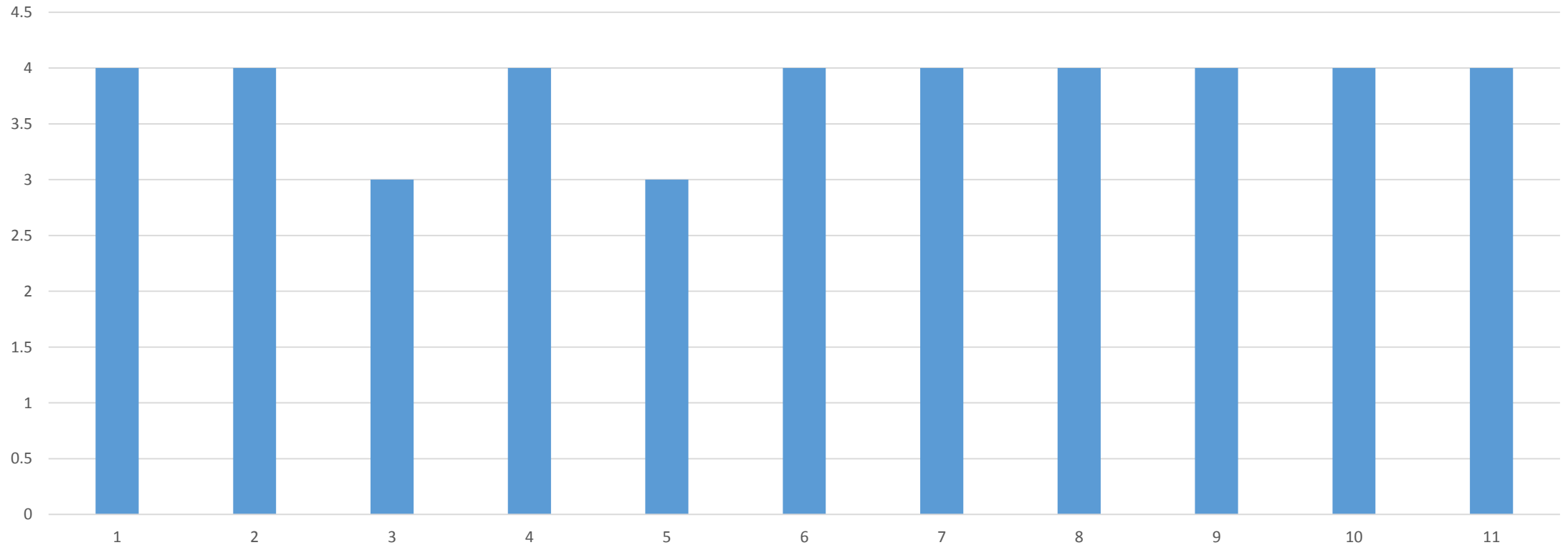


2. The Organisation/ management arrangements Results

Q2(a). Are you informed about the content of the project?

Average: 3.8

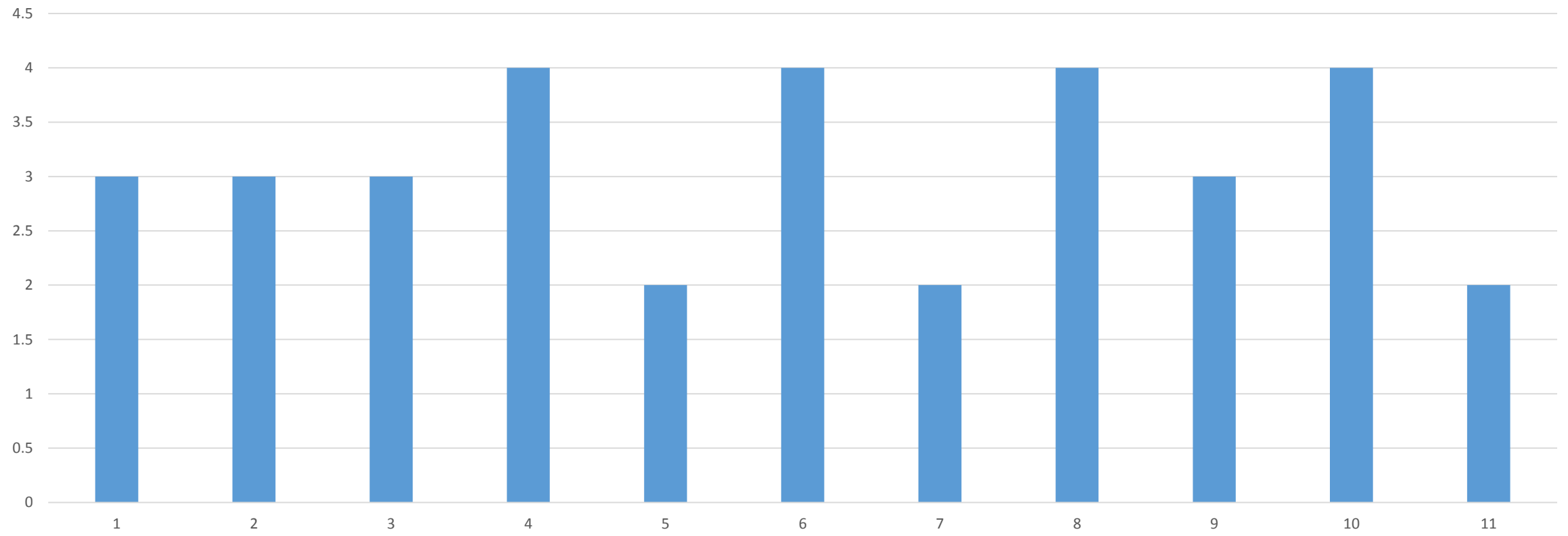
Q2(a)



Q2(b). Are you informed about the management arrangements of the project?

Average: 3.1

Q2(b)

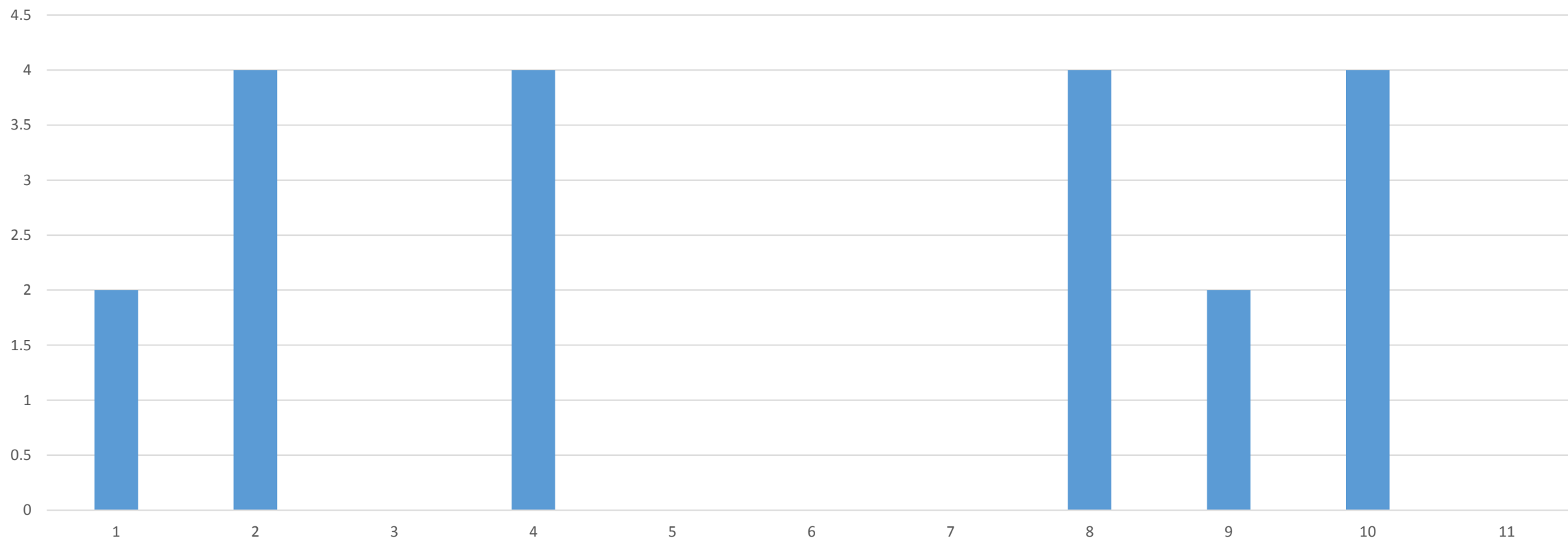


Q2(c). How are you approached to fill this form of the project?

Average: 3.3

Note: Almost 50% of the participants didn't answer

Q2(c)



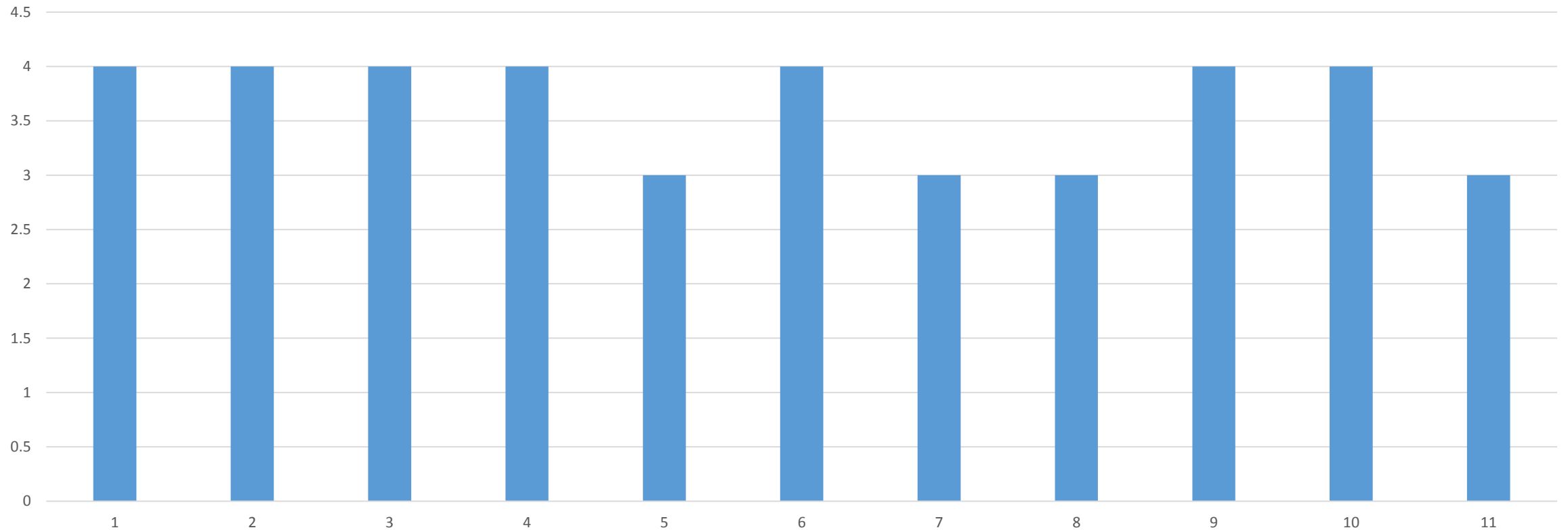


3. The Content of the project - Results

Q3_1. Do you feel comfortable and familiar with the aims of the project?

Average: 3.6

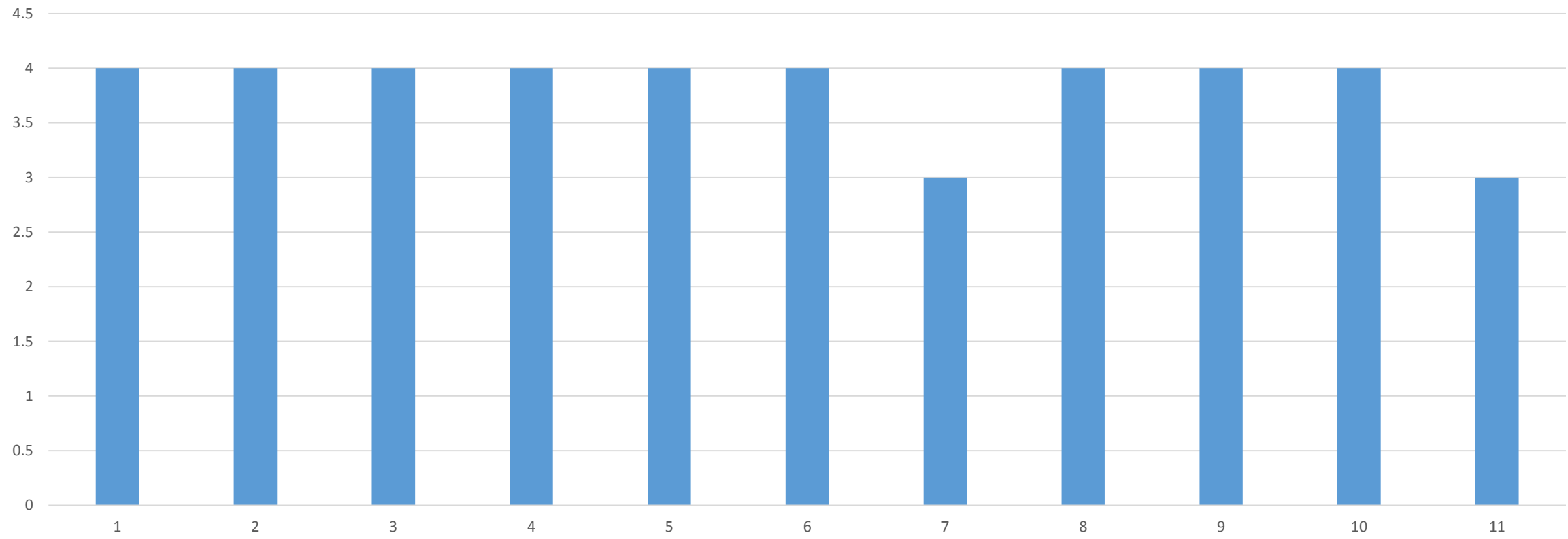
Q3_1



Q3_2. Do you feel willing to be involved with the expected activities of the project?

Average: 3.8

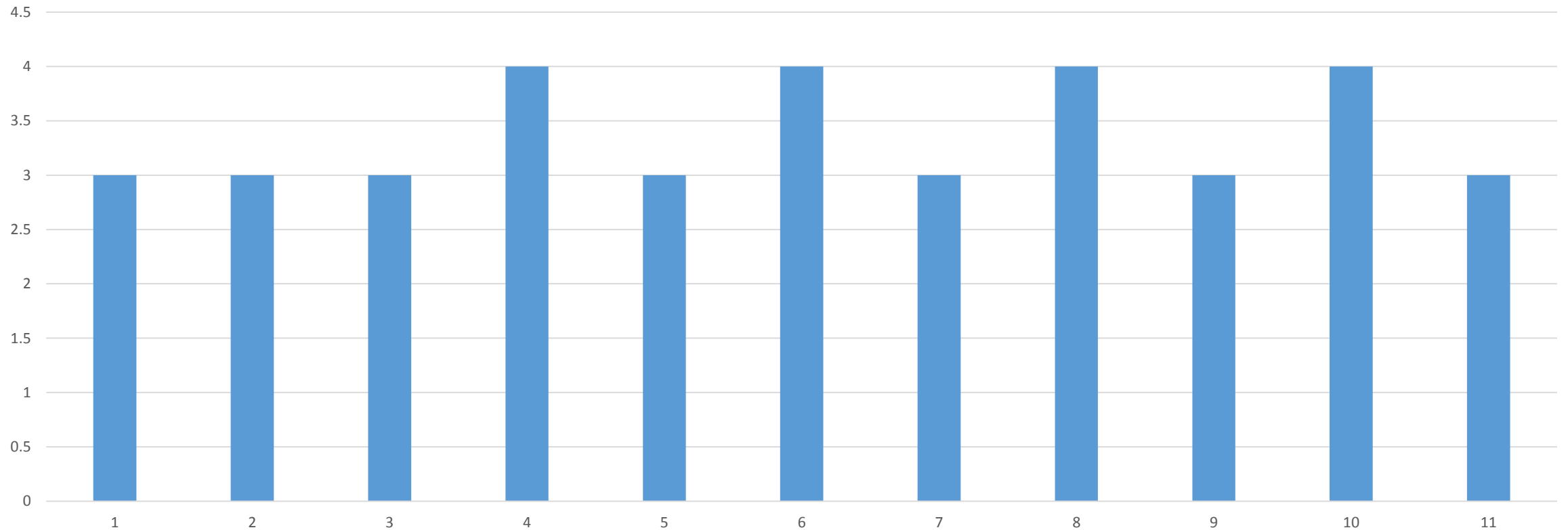
Q3_2



Q3_3. Do you feel comfortable and familiar with a broad description of the expected outcomes of the project?

Average: 3.4

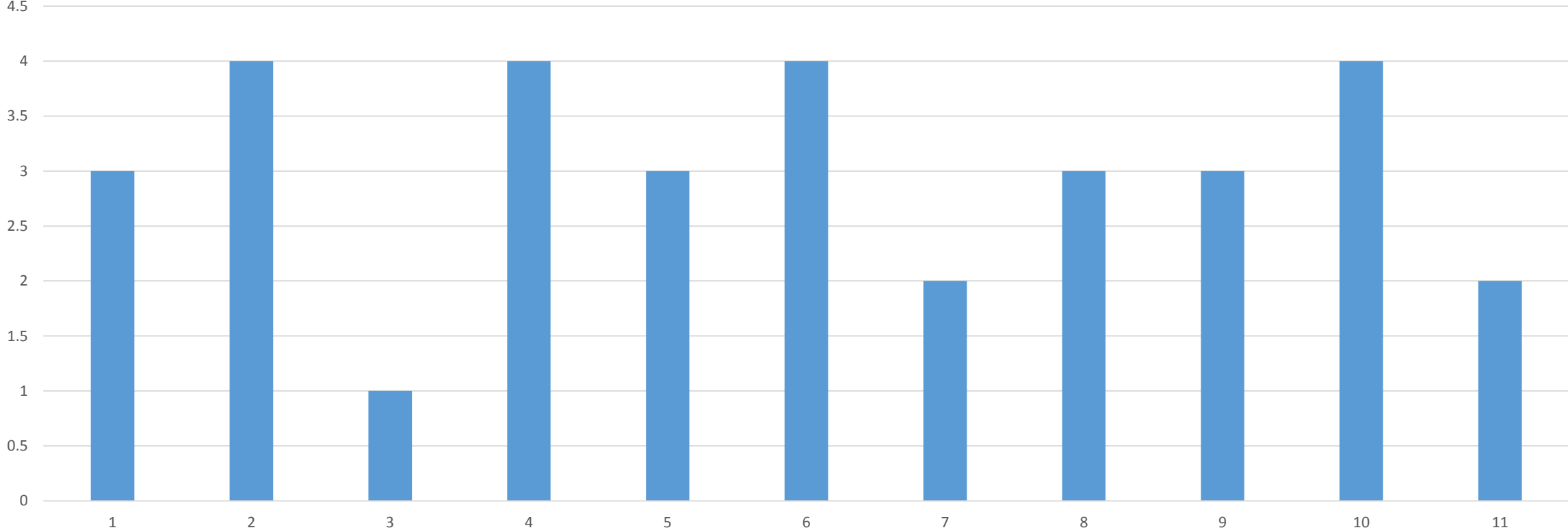
Q3_3



Q3_4. Have you been involved in the process of thinking of the consequences of the developments in the real world and the competencies needed from the future citizens?

Average: 3

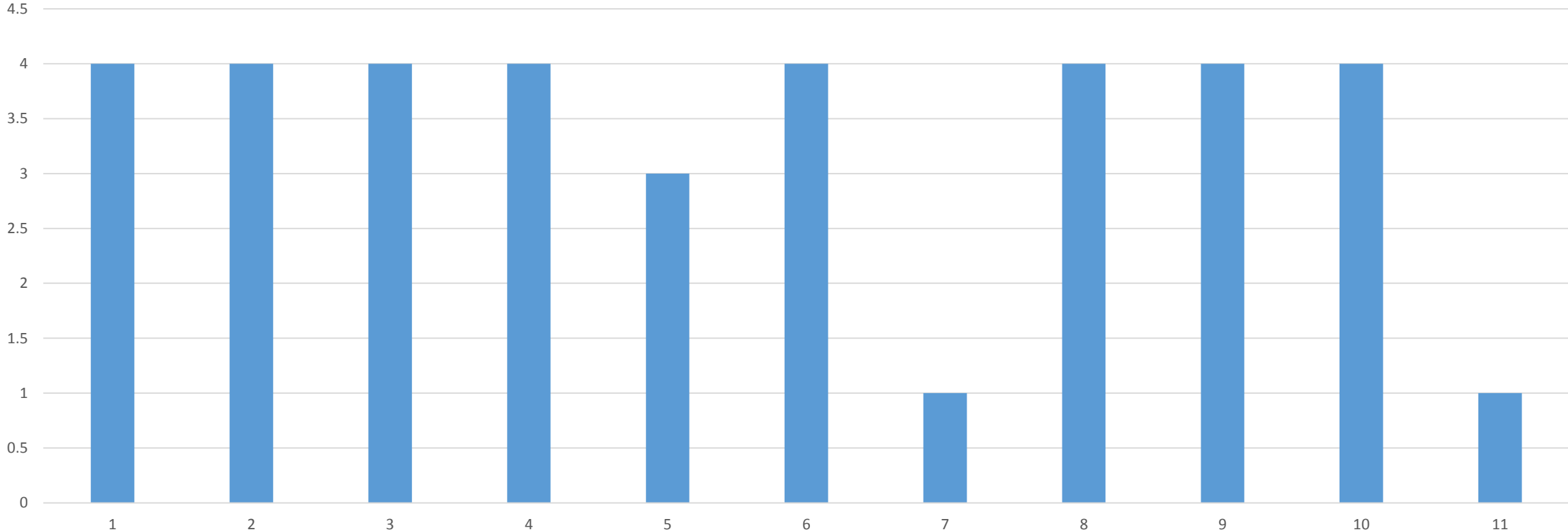
Q3_4



Q3_5. Do you feel that the present project could contribute to the proper preparation of the future students ?

Average: 3.4

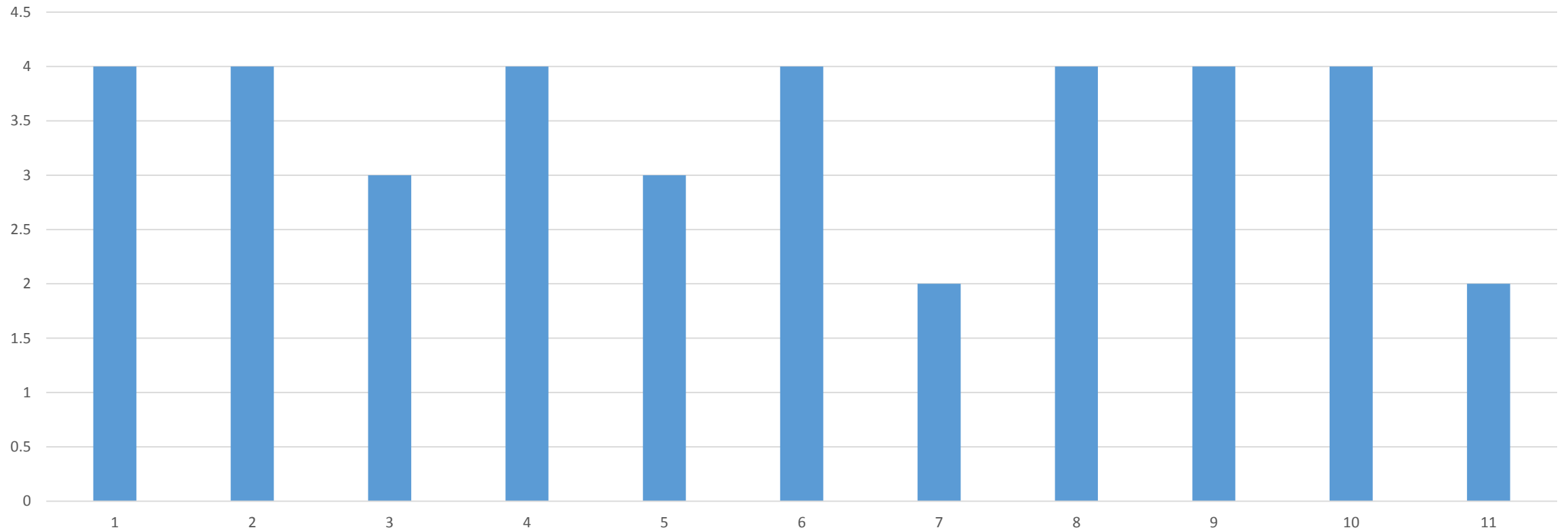
Q3_5



Q3_6. Do you feel that the present project could contribute to the proper preparation of the teachers?

Average: 3.5

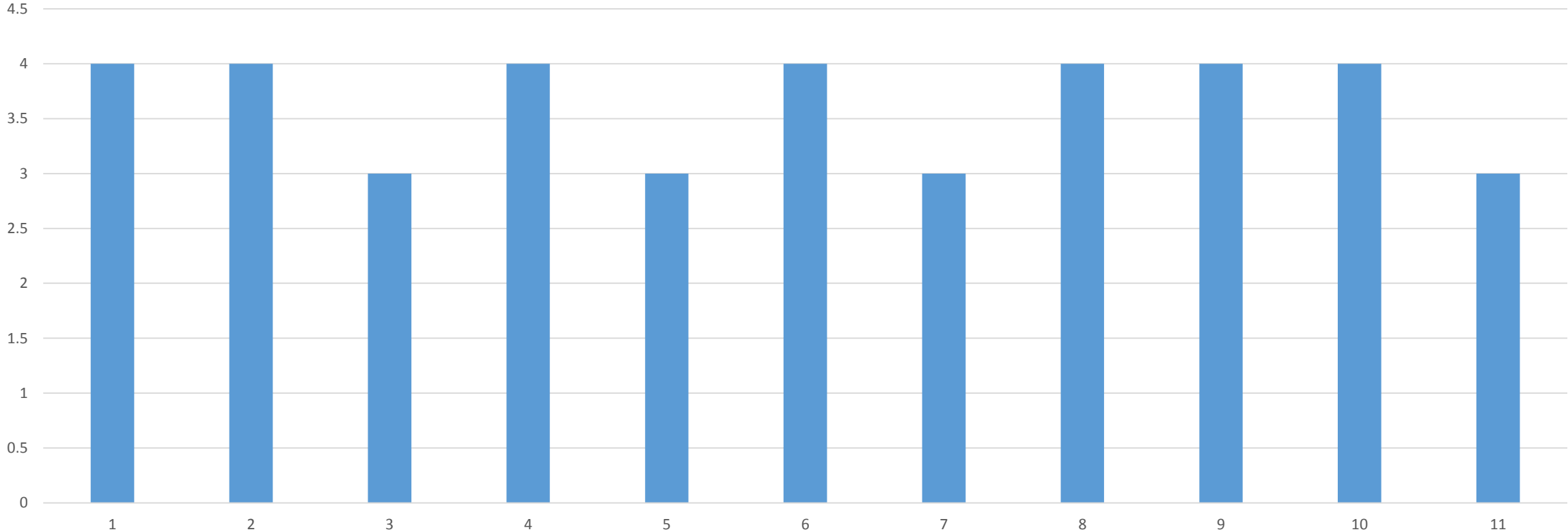
Q3_6



Q3_7. Do you feel that the project outputs could contribute to the development of STEAME education in your country?

Average: 3.6

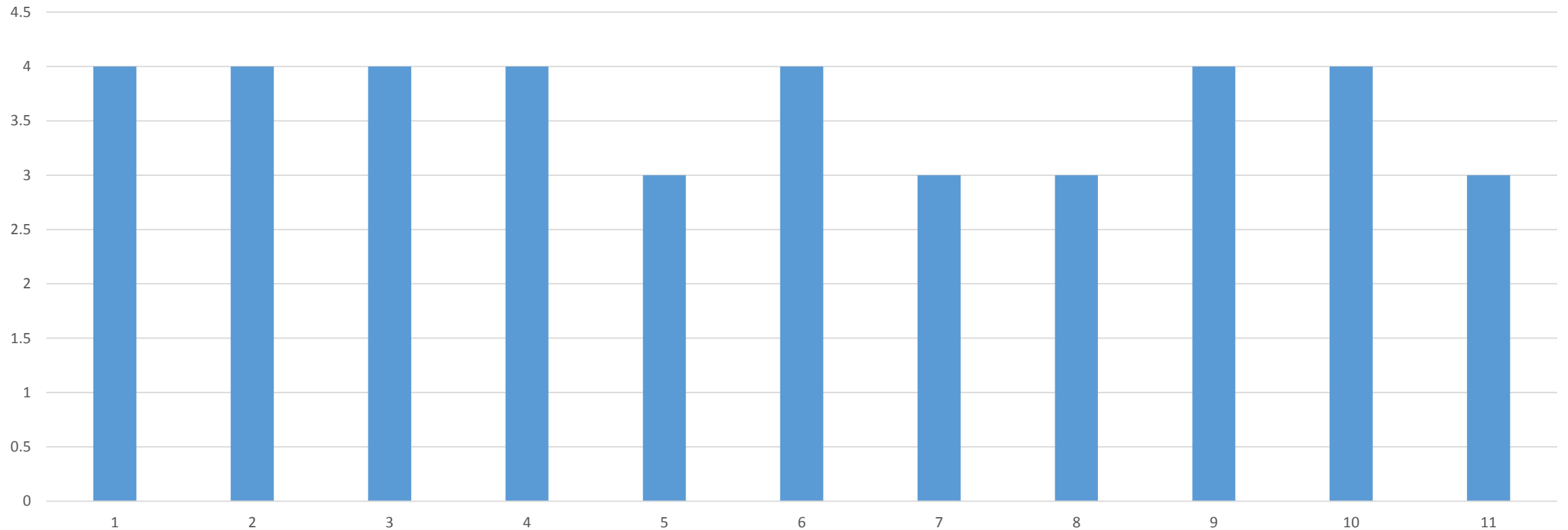
Q3_7



Q3_8. Do you feel that the project outputs could contribute to the development of STEAME education in Europe?

Average: 3.6

Q3_8





4. Concerns – Open Questions

Q4_1. What type of risks are you envisaging in the process of developing activities in the context of the present project?

- In my opinion and considering I don't have such a great experience with this kind of innovative projects, I think we could have some difficulties in developing the outputs and finding the necessary data required by some of them (O1).
- If they are applicable in regular lessons.
- The risks are related with the different educational systems in the school programs of various countries.
- The activities have to be applicable in real classes
- Response by the partners on time. Quality work and outputs.
- Quality and applicability of project outputs.
- Synchronization among partners
- In my opinion and considering I don't have such a great experience with this kind of innovative projects, I think we could have some difficulties in developing the outputs and finding the necessary data required by some of them (O1).
- Meeting deadlines
- "There is a risk that the project will produce only formal but otherwise useless output. Another issue is if there will be not enough interest in training activities offered in the project."

Q4_2. What are the main issues/elements, for which you are, in major, concerned?

- I'm really enthusiastic about the project but also a bit concerned about the development of the outcomes.
- In the way to Combine different subjects, we may not emphasized the content-goals of the curriculum.
- To avoid a complete process without leveling the educational subjects
- How we can include all elements of STEAME in real class activities and how we can convince teachers try these activities with there students.
- The format of the outputs
- Not clear how finished STEM projects and their analysis brings us forward. What kind of information do we expect to extract from them?
- Unwillingness of school staff of the existing schools to implement STEAME education
- I'm really enthusiastic about the project but also a bit concerned about the development of the outcomes.
- Real world implementation of the results and applicability
- Can an adaptive and dynamical curriculum be developed at all? Why shall we stick to the curriculum paradigm?

Q4_3. What are some problems that have to be considered in the context of the project?

- First of all we have to be collaborative and try to respect the deadlines for the different tasks. The lack of a good teamwork may create serious problems in the implementation of the project.
- The reluctance of teachers of different specialties to cooperate to teach interdisciplinary subjects due to curriculum or time restrictions.
- Some partners do not have experience with ERASMUS+ projects and may need help
- Meeting deadlines; quality of deliverables
- Motivation of teachers and students
- Definition of the Observatory. Who runs it and how is it kept up to date?



Q4_4. Any other comments?

- No other comments but great willingness to start working!
- It is a really interesting project related to the implementation results to the various schools

Conclusions

Conclusions I



This pre-evaluation was successfully completed, and the level of scoring is adequate.

- The overall average score from all the participants in Q1 questions related to the *Background on the topic of the project* is **3.4**.
- The overall average score from all the participants in Q2 questions related to *The Organisation/ management arrangements* is **3.4**.
- The overall average score from all the participants in Q3 questions related to *The Content of the project Results* is **3.5**.

Conclusions II



- Several risks were described by the participants concerning the process of developing activities in the context of the present project that should be assessed.
- Main issues/elements were described by the participants.
- Problems that must be considered in the context of the project were also mentioned by the participants, related to communication, deadlines, lack of experience in Erasmus+ Projects, motivation of teachers and students.